

 Eugeny Levin Alisa	 Holger Lieberenz Letzte Instanz	 Jani Liimatainen Cain's Offering	 Manu Livertout Manu Livertout band	 Juan Pablo Lobos	 Juan Carlos Martin Lopez Mago de Oz	 Jari Mäenpää Wintersun
 Christofer Malmström Darkane	 Patrick Mameli Pestilence	 Teemu Mäntysaari Wintersun	 Gazz Marlow InMe	 Orazio Martino Myland, Moto Perpetuo	 Andreas Mäser The Sorrow	 Mark Mitchell Throwdown
 Monte Money Escape The Fate	 Kamal Musallam Kamal Musallam Group	 Kristian Niemann Demonoid	 Johan Niemann Tiamat	 Per Nilsson Scar Symmetry	 Daniel Oberländer War from a Harlots Mouth	 Pekka Olkkonen Stam 1na
 Magnus Olsson	 Jack Owen Deicide	 Marek Pajak Vader	 Pay BIP	 Pepe Reckless Love	 Chavdar Petkov 4040, Guitar Pirates	 Jürgen Plangger EISBRECHER
 Emil Pohjalainen Thaurorod	 Sami Raatikainen Necrophagist	 Laki Ragazas Devil's Train	 Michael Rank EKTOMORF	 Sebastian Reichl Deadlock	 Paul Reid Beverley Knight, The Saturdays, Session	 Markus Resi myGRAIN
 Mike Reynolds For Today	 Arjan Rijnen ReVamp	 Christophe RIME RIME	 Rithan Deja Voodoo Spells	 Yannick Robert Yannick Robert	 Chad Robles Eternal Now	 Robby Rockbag Steelwing
 Igor Romanov Alisa	 Patrick Rondat Patrick Rondat, Elegy	 Gert Rymen Deadlock	 Henri Sattler God Dethroned	 Frank Schiphorst Ma'YaN	 Oliver Schmidt Letzte Instanz	 Robert Schönleitner Juvaliant
 Dominik Sebastian Edenbridge, Thirdblood	 Eran Segal Aborted	 Justin Shekoski Saosin	 Alexey "Sherkhan" Sidorenko Megamass	 Alejandro Silva Alejandro Silva Power Cuarteto	 Terji Skibenæs Tyr	 Waldemar Sorychta Enemy of the Sun
 Felipe Souza Independent, Bla Bla Bla, Paleta-Souza	 Chris Stalder X Age, Jodyacs	 Matt Steane Never Means Maybe	 UMUT TÖRE HAYKO CEPKIN	 Olli Tukiainen Poets of The Fall	 Sébastien Tuvi The Order of Apollyon, Asooth	 Patrick Uterwijk Pestilence
 Ludovico Vagnone Independent	 Elias Viljanen Sonata Arctica	 Harj Virdee SEVEN DEADLY	 Everton Waldman Solo Artist	 Pop Waravit Rancorous	 Stefano "Sebo" Xotta UTEZ, Strings 24	 Pavel Zaburuev

Amplifiers Effects Accessories

For all the warm tube overdrive punch and crunch you'll ever need!

TUBE SCREAMER AMPLIFIER

We don't know why we didn't do it years ago: Tube Screamer, the overdrive pedal considered "absolutely mandatory" by a whole generation of guitarists, is now built right into the circuitry of our new series of tube driven amplifiers. Perfectly matched with CELESTION® speakers, these TSAs can do it all. Clean, they produce a rich, clear tone. Drop 'em down into overdrive and the tube saturation will delight the toughest of the old school tone snobs.



Boost Switch

Turning the boost switch on increase gain by 6db. This function gives players a thicker Tube Screamer sound.



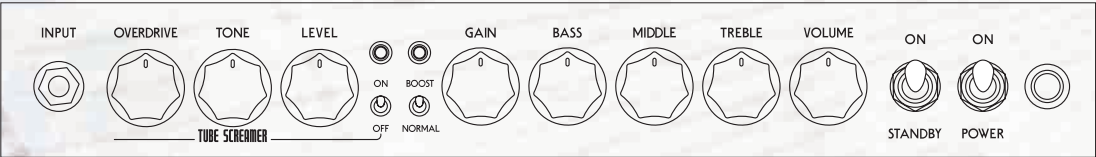
Gain and Tone Control

TSA30 features Gain and 3-band Tone control which can design natural clean tone, fat distortion sound, varieties of tube sounds of Ibanez Tube Screamer Amp.



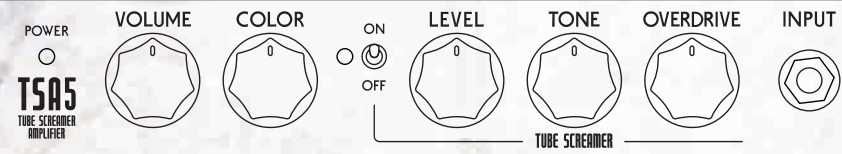
Speaker Outputs

A variety of outputs allows connection with most types of speaker cabinets. Enjoy the full-tube tone of the TSA with your favorite cabinet.



Tone Control

The "COLOR" knob on the TSAs allows control of tube tone nuance.



Guitar Combo Amplifier

TSA30

- output power 30W@4Ω/ 8Ω/ 16Ω
 - speaker unit 12" Celestion® Seventy80
 - controls Boost/Normal switch, Tube Screamer on/off switch, Gain, Master volume, Bass, Middle, Treble
- Tube Screamer section: Overdrive, Tone, Level
- Input, Footswitch, Effect Loop (Send / Return), Speaker output
- Semi open back
- Pre amp: 12AX7 x 3, Power amp: 6L6GC x 2
- 2 outputs (4Ω/ 8Ω/ 16Ω switchable)
- 478 (W) x 265 (D) x 445 (H)(mm)
- 17.7kg



IFS2G

Footswitch

This latching footswitch with green housing is made especially for Tube Screamer Amplifiers. (for TSA15H/TSA15/TSA30)

TSA5

Guitar Combo Amplifier

- output power 5W@8Ω
 - speaker unit 10" Celestion® Tube10
 - controls Tube Screamer on/off switch, Master volume, Color
- Tube Screamer section: Overdrive, Tone, Level
- Input, Footswitch, External speaker output
- Semi open back
- Pre amp: 12AX7 x 1, Power amp: 6V6GT x 1
- 1 x 8Ω External Speaker output
- 335 (W) x 195 (D) x 310 (H)(mm)
- 7.9kg

IFS1G

Footswitch

A 1 channel latching footswitch with green housing is made especially for the TSAs.



Boost Switch

Beef up the Tube Screamer vibe with the 6db of gain provided by the boost switch. (For TSA15H/TSA15)



Tone Control

EQ your "tube-o-liciousness" with this simple two-band control.



Speaker Outputs

A variety of outputs allows connection with most types of speaker cabinets. Enjoy the full-tube tone of the TSA with your favorite cabinet.

TSA15H

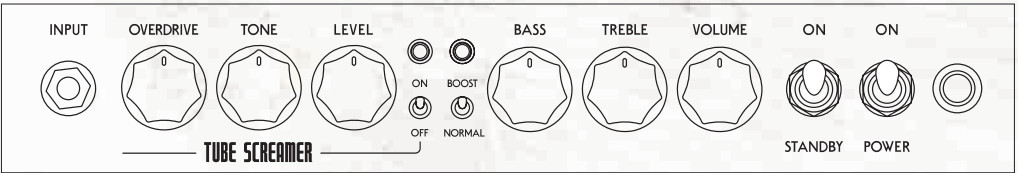
Guitar Amplifier Head

- output power Pentode - 15W / Triode - 5W @4Ω/ 8Ω/ 16Ω
 - controls Boost/Normal switch, Tube Screamer on/off switch
- Master volume, Bass, Treble
- Tube Screamer section: Overdrive, Tone, Level
- Guitar input, Footswitch, Effect loop (Send/Return), Speaker output
- Pre amp : 12AX7 x2 Power amp : 6V6GT x2
- 2x 4Ω, 2x 8Ω, 1x 16Ω
- 368(W) x 200(D) x 172(H)(mm)
- 7.6kg

TSA112C

Speaker Cabinet

- power handling 80W
- speaker 12" Celestion® Seventy80
- i/o's Input 8Ω
- size 460(W) x 305(D) x 410(H)(mm)
- weight 13.0kg



Wattage Selection (for TSA15H/TSA15)

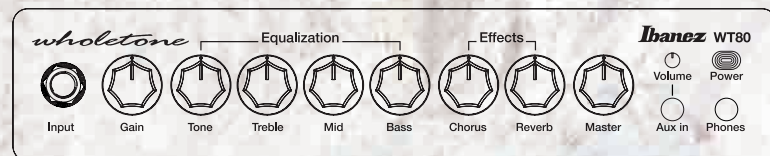
TSA15H and TSA15 are able to switch between 15W mode and 5W mode by using the switch located on the back of the amp. 5W mode is designed for those quieter playing situations like practice or home recording, when you require less volume but still desire plenty to warm Tube Screamer tone.

TSA15

Guitar Combo Amplifier

- output power Pentode - 15W / Triode - 5W @4Ω/ 8Ω/ 16Ω
 - speaker unit 12" Celestion® Seventy80
 - controls Boost/Normal switch, Tube Screamer on/off switch
- Master volume, Bass, Treble
- Tube Screamer section: Overdrive, Tone, Level
- Guitar input, Footswitch, Effect loop (Send/Return), Speaker output
- Semi open back
- Pre amp : 12AX7 x 2, Power amp : 6V6GT x 2
- 2 x 4Ω, 2 x 8Ω, 1 x 16Ω
- 435 (W) x 222 (D) x 435 (H)(mm)
- 15.0kg

wholetone



The Ibanez WT80 was made to produce clean sounds. With 80W of power and a 15-inch speaker, players can get clean sounds with plenty of volume. The DSP-based precision limiter makes it possible to raise the volume without the sound distorting.



3-band EQ + Tone

Aside from its 3 band EQ, an additional tone control allows you to adjust the overall tonal character of the amp.



Chorus & Reverb Effects

Chorus and reverb controls allow you to add depth and space to your sound. The Aux inputs separate volume control allows you to blend just the right amount of backing tracks with ease.

WT80

Guitar Amplifier

- output power 80W@4Ω
- speaker unit Special Tuned 15" Speaker
- controls Gain, Bass, Mid, Treble, Tone, Master-Volume, Aux-Volume, Chorus, Reverb
- i/o's Input, Aux Input, Headphones Out with Stereo FX
- cabinet Ported Cabinet
- size 440(W) x 366(D) x 500(H)(mm)
- weight 17.6kg

IBZ

These Ibanez practice amps provide players with full-on guitar sound.

With a high output of 15W and an 8" specialized speaker, the IBZ15GR can pump out a surprisingly big sound. In addition to full-fledged distortion, a control for reverb has also been added.



IBZ15GR

Guitar Amplifier

- output power 15W@4Ω
- speaker unit 8" Speaker
- controls Normal Channel - Volume, Channel Switch
- i/o's Distortion Channel - Gain, Volume
- cabinet Bass, Middle, Treble, Reverb
- size Input, Aux Input, Headphones Out
- weight Closed Back



IBZ10G

Guitar Amplifier

- output power 10W@8Ω
- speaker unit 6.5" Speaker
- controls Overdrive On/Off Switch, Gain
- i/o's Bass, Treble, Volume
- cabinet Guitar Input, Headphones Out, CD Input
- size Closed Back
- weight 274(W) x 200(D) x 313(H)(mm)

This amp reproduces a heavy sound using a closed-back cabinet and a 6.5" Power Jam speaker. It comes with simple Bass / Treble control for producing various tones as well as a CD input.

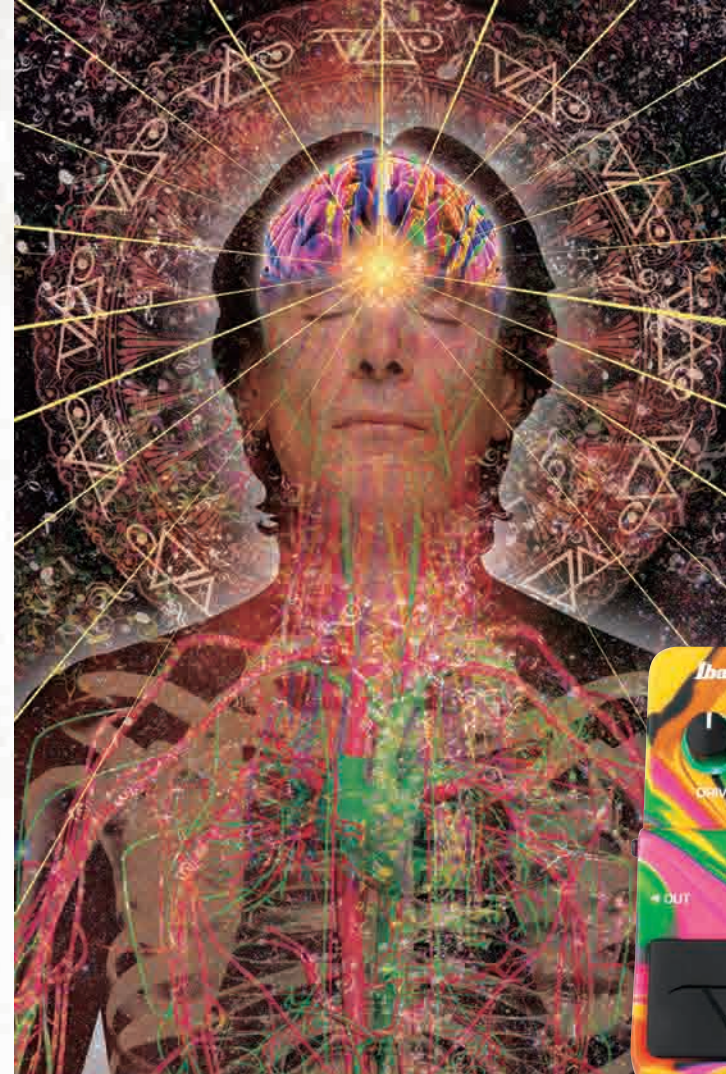
DAG1

Desktop Guitar Amplifier

- output power 1.6W@8Ω
- speaker unit 3" Speaker
- controls Distortion On/Off Switch, Treble, Contour, Volume
- i/o's Guitar Input, Headphones Out, CD Input
- size 102(W) x 63(D) x 116(H) (mm)
- power source 9V battery (sold separately)

DESKTOPAMP

These compact amps are great for small places. Put on a desk or take it outside. Connect a digital audio player or other audio device and jam along with your favorites. Hot switch provides guitar distortion.



Jemini

dual distortion reality

Steve Vai's Signature Distortion Pedal with overdrive and distortion in one package. Featuring a rigid aluminum case, magnificent LED lights around the knobs, and a unique multicolor case with Vai logo rubber foot pedals. The JEMINI is meant to be seen and heard.



Heavy Duty Aluminum Housing

The housing is finished off with Steve's infamous trademark swirl paint job.



Steve Vai Signature Foot Pedals

Steve's trademark logo is imprinted on the Jemini's foot switches.



LED Lit Controls

Each side includes drive, tone and level controls with LED indicators around each control and the LED bright/save control switch for daytime use or saving the battery.

JEMINI

Steve Vai Signature Distortion "JEMINI"

- controls Distortion A/B, DRIVE, TONE, LEVEL
- switch LED BRIGHT/SAVE
- i/o's INPUT/ OUTPUT
- size 170(W) x 140(D) x 58(H)(mm)
- power source Operates with a DC9V AC Adapter or 9V Battery



AIRPLANE FLANGER

Paul Gilbert Signature Pedal Effect Flanger

The Paul Gilbert Signature AF2 AIRPLANE Flanger is two pedals in one package. One section is a traditional chorus flange (TAXI); the other is an insane (TAKEOFF) flange (hence the "AIRPLANE" moniker), which provides virtuoso guitarist Paul Gilbert's own "Crazy Flange" sound. Time to buckle up. The AF2 features Manual (delay time), Speed (modulation speed), Range (depth of modulation), and Enhance (feedback) controls.



AF2

Paul Gilbert Signature Flanger "AIRPLANE FLANGER"

- controls TAXI: Flange/Chorus Type Modulation Effect
- i/o's TAKE OFF: Jet Sound (shifting pitch up and down)
- size MANUAL: Delay Time
- power source SPEED: Modulation Speed
- RANGE: Depth of Modulation
- ENHANCE: Feedback
- EFFECT ON/OFF Switch
- TAXI/TAKEOFF Switch
- INPUT/ OUTPUT(Mono)
- 180(W) x 134(D) x 65(H)(mm)
- Operates with a DC9V AC Adapter



TUBE SCREAMER



SD9M Distortion

The return of a legend! The heaviest of the Ibanez 9 series, the SD9 (the SD stands for "sonic distortion") has risen from the ashes, newly modified to cast that metal-head of yours even deeper into the overdrive netherworld. Hit "Mid Boost," hit "Gain Boost," and say goodbye your loved ones. Grab a chord and hold on... *Toto, I don't think we're in Kansas anymore...*



JD9 Distortion

The Ibanez JD9 produces a unique sound reminiscent of a high-grade handcrafted effects pedal. From piercing distortion to the warm crunch of a tube amp, this pedal features a wide variety of drive control options. The mid control is capable of producing a vast range of sounds from American hard rock to British heavy metal. The pedal is also designed with True Bypass to keep changes in sound when the pedal is off to a minimum.



BB9 Booster

The Ibanez BB9 is a booster that provides a fat bottom end and a powerful sound. This pedal is designed to help clean tones reverberate even more and bring more intensity to a player's sound. Combination with a distortion pedal allows for creation of a wide variety of tone colors, and the pedal is also equipped with True Bypass.

TS808HW Hand-Wired Tube Screamer



The Ibanez Tube Screamer, in its many versions and forms, can be found on pedal boards in every corner of the globe, on arena stages and in small studios and bedrooms. Its warm overdrive is a sound many players, from advanced to beginner, could never do without. Now, it gets even better with the release of the TS808HW, a Hand-Wired deluxe Tube Screamer, built with the pro musician in mind. Encased in a special, heavy duty metal box, the TS808HW is Hand-Wired with select JRC4558D chips (same as the revered and often imitated TS808) and uses Japanese highend OEC cable (AWG21). Equipped with True Bypass, this Tube Screamer, sends pure guitar excitement to your amplifier with no tonal loss whatsoever. This is, by far, the most evolved Tube Screamer, ever created.



DC3/DC5 and DC3L/DC5L

Splitter cords for powering 3 or 5 pedals from one adapter. Angled plug versions (DC3L/DC5L) are also available.

EFFECTS 9series

For more than a quarter century, the Tube Screamer has continued to captivate players as the first name in overdrive pedals. With that same distinctive sound and high quality esteemed even by pro players, Ibanez compact effects pedals set the new standard in guitar sound.



FL9 Flanger

Same circuitry and coveted flanging effects of the original '80s unit but constructed to closer tolerances for more consistency from unit to unit. If you've been hunting for an original but couldn't find one, or couldn't afford a high asking price, now's your chance to bag this '80s favorite. Might even be better than the original.



AD9 Analog Delay

The Ibanez AD9 Analog Delay Effect Pedal uses a compander with pre- and de-emphasis for an exceptionally clean delay. Time and level controls allow mixing between dry and delayed signals. Repeat control lets you adjust the number of repeats without runaway. 2 outputs enable dry and delayed signals to be routed separately.



CS9 Stereo Chorus

When it comes to compact effects, nine is the magic number. By popular demand (and the understandably escalating prices of the originals), Ibanez has reissued its popular CS9 chorus featuring the original circuitry. If you missed out on getting one of these classics the first time around, now is your chance.



TS808 The Original Tube Screamer

Modeling and boutique pedal makers have copied the smooth and full tone of this pedal countless times. Now you can have Ibanez's faithful reissue at a price that doesn't break the bank. The reissue features the same JRC4558D IC chip and analog circuitry as the original. Controls include overdrive, level, and tone controls.



TS9 Tube Screamer

The Ibanez TS9 Tube Screamer, is a reissue that's just like the original in so many ways. Same housing, same famous seasick-green paint, and the same crankin' overdrive that made the original one of the all-time classic pedals. Guitar Player called it the best. Plug it in. Crank it up. You'll hear what all the fuss is about. Tone, drive, and level controls.



TS9DX Turbo Tube Screamer

The Ibanez TS9DX Turbo Tube Screamer, Effects Pedal features the same circuit as a TS9 Tube Screamer, and also offers 3 new settings for increased low end crunch: +, Hot, and Turbo.

TUBE KING

While the tube in many 9-volt tube-overdrive pedals functions merely as a filter, the TK999 Tube King and its crown jewel 12AX7 tube get genuine high voltage, just like a tube preamp. The result? The Tube King can make any solid-state amp sound just like a tube amp, with massive, tight overdrive/distortion.

TK9990D Tube King Overdrive

- Genuine High Voltage Tube Overdrive
- 3 band EQ with presence
- Gain and level controls
- Hi/Lo input switch
- AC Adapter included



TK999HT Tube King Distortion

- Genuine High Voltage Tube Distortion Pedal
- Actual 12AX7 Tube
- Active EQ plus Presence Switch
- VOID Control
- AC Adapter included



Range switch : Guitar 350Hz - 2.2kHz
Bass 175Hz - 1.1kHz
Depth control : +6 - +12dB



WD7JR

Weeping Demon Junior

A more affordable version of our WD7 pedal, the WD7JR presents a high quality wah-wah pedal at a great price. Activates with minimal pedal pressure. Auto Off Delay control allows you to delay the end of wah-wah effect after your foot leaves the pedal, for smooth transition and phrasing. Features a maintenance-free optical sensor no need to worry about producing unwanted noise from the volume pot. Also includes Level control for volume adjustment.



WD7JR/Auto-Off Delay

Adjusts the time delay from when the pedal is returned until the effect switches off. Turning this clockwise will increase the time delay, preventing the effect from turning off while you are operating the pedal. Turning this counterclockwise will make the effect turn off more quickly, so that it will turn off immediately when you return the pedal.

WD7

Weeping Demon

With its shrieks, cries, wails, and seductive siren songs the Ibanez WD7 Weeping Demon Wah Pedal will have your audience screaming for more. Among its features are spring and normal footboard action, selectable wah range, and fine tuning controls.



WD7/Auto-Off Delay

In the AUTO SWITCH mode, you can set the effect-off either on standard instant off when the pedal is returned to the full upright position or a delayed-off by turning the control clockwise.

WH10V2

WH10V2

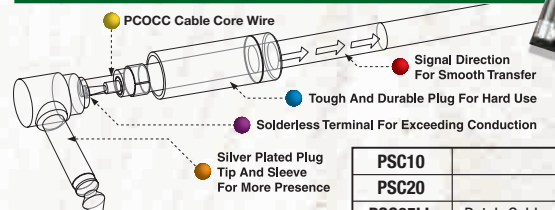
Classic Wah Pedal

The WH10V2 features the same circuit as the original with one major upgrade: a very sturdy metal housing. Ready now for the rigors of the road, the WH10V2 features the same multiple feedback opamp circuit as the original, a type rarely found in today's wah pedals. Tweaking is accomplished with a depth knob to control to level of the wah effect and a dry out for mixing a dry signal with the wah sound. The unique sonic character of the WH10V2 sets it apart from all other in its class.



CABLES

Series PSC



PCOCC stands for "Perfect Crystal by Ohno Continuous Casting Process". This material has remarkable lower resistance and transfers far more High-Frequency signal than TPC or OFC cables.

PSC10	
PSC20	
PSC05LL	Patch Cable
PSC08LL	Patch Cable

CABLE FOR PROFESSIONAL RECORDING AND GIG USE
* Core : 0.1 x 96 (PCOCC)
* Shield 1 : Conductive PVC
* Shield 2 : 0.12 x 16 x 6 Braiding

DSC6	
DSC6L	
DSC10	
DSC10L	
DSC10LL	
DSC15	
DSC15L	
DSC15LL	
DSC20	
DSC20L	
DSC20LL	
DSC25	
DSC25L	
DSC05LL	Patch Cable
DSC08LL	Patch Cable
DSC10BK	Woven
DSC10BL	Woven
DSC10RD	Woven
DSC20BK	Woven
DSC20BL	Woven
DSC20RD	Woven

Series DS



DOUBLE SHIELDED LOW NOISE CABLE
Double-shielded construction offers pro-quality and durability at standard cable prices.
* Core : OFC
* Shield : Braided shield and Aluminum Foil.



Series STC

STC6	
STC10	
STC10L	
STC15	
STC15L	
STC20	
STC20L	
STC25	
STC25L	
STC05LL	Patch Cable
STC08LL	Patch Cable

STANDARD CABLE
* Core : 0.12 x 20
* Shield 1 : Conductive PVC
* Shield 2 : 0.12 x 33 Spiral

Series HAC

HAC10	
HAC10L	
HAC20	
HAC20L	
HAC05LL	Patch Cable
HAC08L	Patch Cable
HAC08LL	Patch Cable

HEAVILY ARMORED CABLE
Durable, originally designed plug for easy operation
* Core : 0.12 x 20 OFC
* Shield 1 : Conductive PVC
* Shield 2 : 0.12 x 16 x 4 Braiding
* Plug : PVC original shape



Model Number System

Series

PSC : Series PSC
NSC : Series 96
DSC : Series DS
HAC : Series HAC
STC : Series STC

NSC08LL

Length

6	6ft/1.83m	25	25ft/7.63m
10	10ft/3.05m	50	50ft/15.24m
15	15ft/4.58m	05	0.5ft/15cm
20	20ft/6.10m	08	0.8ft/25cm

Plug Type

L : Straight - Right Angle
LL : Right Angle - Right Angle
none : Straight - Straight

SPEAKER CABLES



for SPCPP
* Core : 0.1 x 40 x 5 (Silver plated)
* Plug : 1/4" x 2
for SPCNN
* Core : 0.1 x 28 x 7 (Silver Plated)
* Plug : Speakon x 2

Plug Type		Plug Type	
1/4" - 1/4"		NL4FX - NL4FX	
Model#	Length	Model#	Length
SPCPP6	6ft/1.83m	SPCNN6	6ft/1.83m
SPCPP10	10ft/3.05m	SPCNN10	10ft/3.05m
SPCPP25	25ft/7.63m	SPCNN25	25ft/7.63m
SPCPP50	50ft/15.24m	SPCNN50	50ft/15.24m

MICROPHONE CABLES

for MCCP
* Core : 0.1 x 14 x 7 (Silver plated)
* Shield 1 : Conductive PVC
* Shield 2 : 0.1 x 16 x 8 Braiding
* Plug : 1/4" + XLR
for MCCC
* Core : 0.12 x 20 (x 2 : Stereo)
* Shield 1 : Conductive PVC
* Shield 2 : 0.12 x 16 x 6 Braiding
* Plug : XLR + XLR



Plug Type		Plug Type	
XLR-1/4"		XLR-XLR	
Model#	Length	Model#	Length
MCCP10	10ft/3.05m	MCCC10	10ft/3.05m
MCCP20	20ft/6.10m	MCCC20	20ft/6.10m
MCCP50	50ft/15.24m	MCCC50	50ft/15.24m

TUNERS

In the process of designing six, seven, and eight string guitars for players who use all kinds of alternate tunings, we learned plenty about what works and what doesn't when it comes to tuners. Ibanez makes tuners that work—quickly, accurately and with the reliability that performers have come to trust.



PU30

Ibanez clip tuners are designed to tune electric and acoustic guitars, basses, violins, banjos, mandolins, and more, without interference from ambient room noise. The auto-rotate G-Meter will re-orient the display to upright, no matter how the player chooses to configure clamp and flexible stem.

G-Meter Clip Tuner



PU1G

PU1G for guitar and bass offer switchable modes: Automatic (for standard tuning) and Chromatic (for alternate tunings). Features an invertible display, which turns the readout 180 degrees at the press of a button.

Clip Tuner



LU30

Pedal Tuner

This tuner features an aluminum die-cast housing as well as a highly visible LED display. We put a high priority on creating an easy to see display in a compact size tuner. It fits perfectly even in the limited space available on effects boards. One output of the LU30 is muted when it is turned on.



GU1

Automatic Tuner

GU1 and CU1 have two display modes (Needle & Strobe).
-Needle display mode: the meter moves the same as the tuner ever
-Strobe display mode: the meter goes round and tune
CU1 also has manual tuner mode. The operation is very simple even for beginners.



CU1

Chromatic Tuner



GU40

Automatic Tuner

The colorful GU40 guitar tuner features hands-free tuning. This no-hassle auto tuner is fast and accurate and works with guitar, bass or almost anything that shares the same tuning. It even has seven tuning notes for 7-string guitars. The GU40 guitar tuner has a built-in mic for fast and accurate metering.



CU40

Chromatic Tuner

The CU40 chromatic guitar tuner is fast and accurate and works with guitar, bass or almost anything else. The CU40 has a large LCD display, LED 'flat' and 'sharp' guide lights and a built-in mic for fast and accurate metering.



MU40

Metronome Tuner

The dual purpose Ibanez MU40 Tuner/Metronome indicates pitch with an LCD needle display plus red flat and sharp, and a green in-tune LEDs. Designed for electric guitars, basses and acoustic instruments. Built-in metronome with speaker, mute switch, and headphone input. Ideal for teachers and students.

BAGS

Powerpad Gig bags

- Maximum protection gig bag
- 25mm firm edge cushioning
- Smart zipper design provides quick, safe instrument removal

IGB621-BK

IGB621-KH



Smart Pocket
Smart Pocket for smart phone or MP3 player



Powerpad
25mm Hard Cushion (Powerpad) in the bottom and the side for stronger protection



Enamel Bags

- Glossy black enamel

ISGE501-BKS



Deluxe Bag with Backpack

- Heavy padded gig bag
- Combination bag features a separable backpack

Backpack



Standard Bags

- Thicker shoulder pads
- Improved strap angle
- Waist belt
- Bottle holder

ISGB501-BK

ISGBT501-BK
for X, ICT, STM



ISGB531-CCT
Camouflage City

ISGB531-CSD
Camouflage Sand

ISGB531-CGR
Camouflage Green

Deluxe Gig Bag

- Thicker shoulder pads
- Improved strap angle
- 8 pockets
- Waist belt



IGB601



IGB701-BK

Ultra-Deluxe Bag

- Super-thick, soft-padded interior
- Extra-padded backpack straps
- Chest & waist belt
- Bottom cover



IGB611-BBK

Original Bag

- Shoelace design
- Thick cushioning



IGB101

Gig Bag

- Shoulder pads
- Bottom pocket

STANDS

ST101

Compact size folding guitar stand for Electric/Acoustic Guitar and Bass.



ST201

Folding guitar stand for Electric/Acoustic Guitar and Bass.



CASES

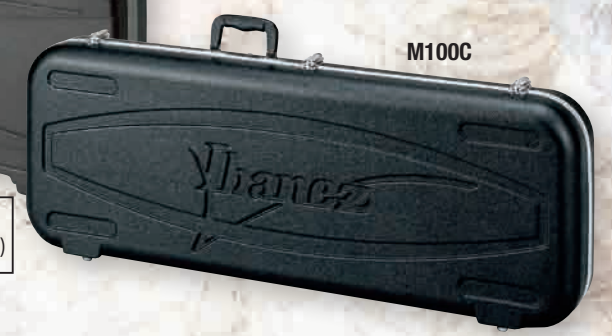
Molded Cases

MP100C	for RG, RGA, RGD, RG7, RGD7, S, SA, FR, left handed models
--------	--



MP100C

M100C	for RG, RGA, RGD, RG7, S, SA (except 27" scale & left handed models)
-------	--



M100C

M5C	for RG, RGA, RG7, S (except 27" scale & left handed models)
-----	---



M5C

Wood Cases

W50RG	for RG, RGA, RGD, RG7, RG8, S, SA (incl. 27" scale & left handed models)
W50DNT	for DN



AS-C	for AS
GB-C	for AG, AGS
AR-C	for GAX, AR, ART, ARX
AFS-C	for AFS
AF-C	for AF, AK
AM-C	for AMF

Featherweight Case

F50C	for RG, RGA, RGD, RG7, RGD7, S, SA, FR, left handed models
------	--



STRAPS

GS260

Trapper Strap

- 60(mm) width / 1500(mm) length
- Original Strap Ends

Simply slide Trapper Strap ends over the guitar's strap button so the button is lodged tight, just above the Ibanez logo.

USA PATENT #7781656
JAPAN PATENT #4732503

GS260 WH

GS260 BK

GS260TA GY

GS260TA RD

GS361 BK

Quick Adjust

- 60(mm) width / 1500(mm) length
- Original Grip Adjuster

The Grip Adjuster enables you to find your most comfortable position with one simple operation. By pressing the lever, the Grip Adjuster slides and changes strap length. Sliding the Grip Adjuster down while holding the lever makes the belt shorter and moves the guitar up, while sliding the Grip Adjuster up, will give you the opposite effect.

JAPAN PATENT #4773493

GS602LG RD

GS602LG

• 60(mm) width / 1500(mm) length

GS602LG DK

GS602LG SL

GS61

- 60(mm) width / 1500(mm) length

GS61L

- 60(mm) width / 1800(mm) length

GS61 WH

GS61 BR

GS61 GY

GS61 BK

LS65 BK

LS65

Leather Strap

• 1400(mm) length

LS65 BR

LS65TL BKS

LS65TL BRE

LS65TL WHD

LS65TL BKE LS65TL BRS LS65TL BKG

GS601

• 60(mm) width / 1500(mm) length



GS601LG BK

GS601LG SL

GS601TA BK

GS601TA WH

GS601TA RD

GS601TL GR

GS601TL ML

GS601TL PK

PICKS

Basic Color Series

- Material : Celluloid
- Thickness : Heavy, Medium, Thin
- Colors : PL/BK/WH/HGG/HTN/HSC/SH



Grip Wizard Series RubberGrip

- Thickness : Extra Heavy, Heavy, Medium
- Color : BK/WH/BL/RD

Non-slip rubber softly fits your finger.

Available on polyacetal, or super hard PPS material picks.

Material : PPS



Material : Polyacetal



Grip Wizard Series Sand Grip

- Material : Polyacetal
- Thickness : Extra Heavy, Heavy, Medium
- Colors : BK/WH/BL/RD

Dense and wide surface sand provides hard and sure grip.



Grip Wizard Duo

- Material : Celluloid
- Thickness : Heavy
- Colors : BK1 (Green)/BK2 (Yellow)/BK3 (Pink)

Grip Wizard Duo applies the sand grip for one side, and the rubber grip for the other side. You can choose the grip as you like.



Ibanez Classic Design Series

- Material : Celluloid/*RD : PVC
- Thickness : Heavy, Medium
- Colors : WH/BK/GR/OR/BL/RD/CL



Standard Series

- Material : Celluloid
- Thickness : Extra Heavy, Heavy, Medium
- Colors : BK/WH/SEL/PL/PBK/SH/CTS/PPV/PRD/PBL/MES/MEC

You can have more color and thickness choices.



Signature Models Steve Vai

Here are the Vai's signature picks, and he won't use anything else.



Signature Models The Offspring

Be different. The Offspring picks feature the band symbol on one side, and the band name written in Japanese on the other.



Signature Models Paul Gilbert

These original shaped picks are what THE guitarist with style and speed need.



Ibanez Electric Guitar Artist Roster

Carl A.Tidemann		John Paul Glosava	4ARM	Sean Long		While She Sleeps		Carlos Rufo		Melendi
Keith Aazami	Bad Acid Trip	Peter Goemaere		Juan Carlos Martin Lopez		Mago de Oz		Jack Rufo	Novus Luna, Neo Colours, Kitchie Nadal Band	Deadlock
Tosin Abasi	Animals As Leaders	Matt Good	D.R.U.G.S.	Justin Lowe		After The Burial		Gert Rymen		
Ade	Noxa	Marc Görtz	Caliban	David Ludlow		Greeley Estates		Hironobu Saito		
Ae Aekachai Krai-arnon	Ae Wizard	Cristi Gram	Phoenix	Flemming Lund		The Arcane Order		Simone Salvatore	Ida Landsberg Trio, Solo Artist	
Michael Alderliesten	Houtwiter	Gravy	Mushroomhead	Antoine Lussier		Ion Dissonance		San San	Pee Wee Gaskin	Man on Fire
Edouard Algaillon	Star Academy	Eric Gregson	Sleeping Giant	Tony MacAlpine				Eric Sands	Triptykon	
Richie Allan	The Heavy Metal Ninjas	Karl Groom	Threshold, Shadowland	Mark MacDonald		Austrian Death Machine		V. Santura		
Simon Andersson	Avatar	Ryan Gudmunds	Camifex	Andrea Maddalone		New Trolls		Joe Satriani		
Thomas Andersson	Kamchatka	Noam Guedalia	Sideblast	Jari Mäenpää		Wintersun		Henri Sattler	God Throned	
Cory Arford	Camifex	Brandon Hackenson	Greeley Estates	Brian Maillard		Solid Vision, Dominici		Frank Schiphorst	MaYaN	
Yann Armellino		Trent Hafdahl	After the Burial	Christopher Malmström		Darkane		Oliver Schmidt	Letzte Instanz	
Chris Arp	Psyopus, Hank Williams III	Mårten Hagström	Meshuggah	Patrick Mamel		Pestilence		Denis Schmidt	Caliban	
Francesco Artusato	All Shall Perish	Joel Haines	independent	Teemu Mäntysaari		Wintersun		Robert Schönleitner	Juvaliant	
Oad Attapong Boonsermsup	Street Funk Rollers	Remy Hansen	independent	Khan Manuel				John Scofield		
Matt Aub	TimeLord	Paul Hanson		Gary Markowski		THY ART IS MURDER		Jeremiah Scott	Destroy Destroy Destroy	
Paul Baayens	Hail of Bullets	Jaek Hammond	Chelsea Grin	Gazz Marlow		InMe		Jake Scott	Salt the Wound	
Matt Bachand	Shadows Fall	AJ Harvey	Last Chance To Reason	Andy Martin				Arthur Seay	House of Broken Promises	
Daniel Bage		Mats Haugen	Circus Maximus	Orazio Martino		Myland, Moto Perpetuo		Dominik Sebastian	Edenbridge, Thirdmoon	
Rob Balducci		Simon Hawemann	War From A Harlots Mouth	Andreas Mäser		The Sorrow		Eran Segal	Aborted	
Ball	Bangkaew	Kasper Heikkinen	Amberian Dawn, Guardians of Mankind	James McIlroy	Cradle of Filth, Order of Apollyon, Chaosanct, NFD			Roni Seppänen	Tracedawn	
Terry Balsamo	Evanesence	Ryan Helm	Demon Hunter	Demian Mejicano				King Shah	Metalasia	
Stéphane Barbe	Ex Deo	Oli Herbert	All That Remains	Champ Tanat Metanayon		INCA / Rock dream team		Justin Sheskosi	Sasins	
Way Barrier	Destroy Destroy Destroy	Dragomir Herendić Dragianni		Pat Metheny				Devin Shidaker	Oceanos	
Billy the Bat	Kitty in a Casket	Tony Hernando	Saratoga	Krzysztof Misiak				David Shoaf	Killwhitneydead, The Demonstration	
Honza Kirk Behunek	Solo Artist, SEVEN	Tristan Hex	SIN7SINS	Larry Mitchell		Chylinska		Shore	The Ransack	
Steve Bello	Steve Bello Band	Gabriel Hidalgo	Gabriel Hidalgo band, Six Magics	Mark Mitchell		Throwdown		Alexey "Sherkhan" Sidorenko	Megamass	
Ricky Belloni	II Mito New Trolls	Nick Hipa	As I Lay Dying	Atsushi Miyamoto		Opus Dai		Franky Shombing	Independent	
Justin Bender	Into Eternity	Hiro	Head Phones President	Alexandr Mogilevskiy				Dwight Silks		
Bengbeng	Pas	Pontus Hjelm	Dead by April	Monte Money		Escape The Fate		Alejandro Silva	Alejandro Silva Power Cuarteto	
Jackson Benge	(hed) planet earth	Sander Hoek	Independent, Kelly's Vacation	James Monteith		Tesseract		Roger Sjunnesson	Sonic Syndicate	
George Benson		Wojciech Hoffmann	Turbo	James Morphone		SIN7SINS		Terji Skibenas	Tyr	
Bernth	Belphegor, Bled Dry	Nitzan Hoffmann	Drive Like Maria	Munky		Korn		Michael Soininen	Universum	
Sammy Black	LOVEXX	Dexter Holland	The Offspring	Christian Münzner		Obscura, Spawn of Possession		Ralf Sommerfeld	Solo	
Michael Borchers	Dew Scented	Steve Holt	36 Crazyfists	Yasushi Muratori		MURATORIX		Ken Sorcerer	J Rock	
Stijn Borgers	Poison My Blood	Trond "Teeny" Holter	Wig Wam	Stephen Murphy		Universum		Felipe Souza	Abigail Williams	
Jake Bowen	Periphery	Jason Hook	Five Finger Death Punch	Kamal Musallam		Kamal Musallam Group		Waldemar Sorychta	Enemy of the Sun	
Randy Bowland	Jill Scott, KEM	Bernhard Horn	Callejon	Rami H. Mustafa		Nervecell		Chris Stalder	Independent, Bla Bla Bla, Paula-Souta	
Alen Brentini	Alen Brentini	Luke Hoskin	Protest the Hero	Marcel Neumann		We Butter The Bread With Butter		Matt Steane	X Age, Jodyacs	
Nili Brosh	Sleeping Giant	Bill Hudson	Written in Blood, Circle II Circle	Joseph Nicholson		Rolo Tomassi		Pablo Stipic	Never Means Maybe	
Geoff Brouillette		Chad Huff	Maylene and the Sons of Disaster	Kristian Niemann		Demonoid		Barry Stock	Blackout	
Norman Brown		Scott Hull	Pig Destroyer	Johan Niemann		Tiamat		Nita Strauss	Three Days Grace	
Steve Brown	The Soulless	Ihsahn	Ihsahn, Emperor	Per Nilsson		Scar Symmetry		Vince Stropki	Consume The Fire	
JB Brubaker	August Burns Red	Nightmare Industries	Deathstars	Taro Noda		BLACKBORDERS		Jason Suecof	Salt the Wound	
Ben Brure	Asking Alexandria	John Ivar Venned	Heljareyga	Noodles		The Offspring		Muhammed Suiçmez	Necrophagist	
Tobias Buck	Neaera	Andy Jackson	Terrible Things	Daniel Oberländer		War from a Harlots Mouth		Marcus Sunesson	Engel	
Adam Burman	Spiritus	Brandon Jacobs		Marc Okubo		Veil of Maya		Ken Susi	Unearth	
Gizz Butt	The More I See	Mark Jansen	Epica, MaYaN	André Olbrich		Blind Guardian		Tommy Svela	Purified in blood	
Rudi Buttas	PUR	Jonas Järlsby	Avatar	Pekka Oikkonen		Stam1na		Vlad Tanaskovic	Evans Blue	
Martin Buus	Mercenary	Peung atutapong Rumaklom	Armchair	Magnus Olsson				The Commander In Chief		
Abel Camargo	HIBRIA	Bane Jelic		Ben Orum		All Shall Perish		Mick Thomson	Slipknot	
Chris Camozzi	Michael Bolton	Juan Carlos Jimenez Gomez	MALU	Daniel Osborne		Your Demise		Fredrik Thordendal	Meshuggah	
Noah Carpenter	Skinless	Pascal Jobin	The Agonist	Mike Ostrander		Solo Artist		Olaf Thorsen	Labyrinth, Vision Divine	
Dan Carter	The Lucky Nine	Heri Joensen	Tyr, Heljareyga	Jack Owen		Decide		Andy Timmons	Andy Timmons Band	
Frank Caruso	Arachnes, Strings 24	Roland Johannson	The Unguided	Stu Paice		Your Demise		Andre Tiranda	Siksa Kubur	
Cat Casino	Deathstars	Rob Johnson	Magnitude 9	Marek Pajak		Vader		Tobias	Independent	
Giacomo Castellano	Gianna Nannini, Solo Artist	Steve Jones	The Faceless	David Palau		Filter		Markus Toivonen	Ensiferum	
Dino Cazares	Fear Factory, Divine Heresy	Neil Jones	Kim Wilde, Cee Lo Green, Session	Rob Patterson		Straight Line Stitch		Tora	alice nine	
Cesareo	Elo e le Storie Tese	Dan Jones	Chelsea Grin	Pat Pattison		BIP		UMUT TÖRE	HAYKO CEPKİN	
Curtis Chambers	Franklin Bridge	Juan Juarez	Bonded By Blood	Pay		Reckless Love		Alex Torres	Alesana	
Andy Chandler	Mors Principium Est	Andy K	Spiritus	Pepe		Markonee		Gisle Torvik	Independent	
Sergo Chanturiy	Ion Dissonance	Volkar Kael	Dawn of Ashes	Pera		Burn, DJ Bobo, Tangerine Dream		Sam Totman	DragonForce	
Sebastien Chaput	P.M.T. - Pre Menstrual Tension	Ade Kahney	Tesseract	Zlatko "Sladiu" Perica		4040, Guitar Pirates		Josh Travis	The Tony Danza Tapdance Extravaganza	
Pascal Cheseaux	The Showdown	Chris Kane	Eye of the Enemy	Chaydar Petkov		Weichafe		Koji Tsumoto	Poets of The Fall	
Josh Childers	The Waiters	Kjell äge "Damage" Karlson	ONMYO-ZA	Angelo Pierattini		EISBRECHER		Olli Tukiaainen	The Order of Apollyon, Aosoath	
Audley Chisholm	Netral	Karukan	Samsas Traum	EWout Pieters		Thaurorod		Sebastian Tuvi		
Choky	Roger Cicerò	Alexander Kaschte	HIBRIA	Jürgen Plangger		Benoit POL Group		Dave Uhrich		
Roger Cicerò	Shane Cloutier Band	Diego Kasper	Neaera	Emil Pohjalainen		The M Theory		Patrick Uterwijk	Pestilence	
Shane Cloutier	Agressor, Loudblast	Ilder Kazhanov	Kessier	Benoit POL		Ania		Ludovico Vagnone	Independent	
Alex Colin-Tocquaine	Oceanos	Stefan Keller	SERAPHIM	Marius Pop		Vanishing Point		Steve Vai	Ecliptica	
Nick Conser	Criminal	Jesse Ketiye	Emmure	Sergey Popov		Sirens Cry, Dignity		Van Alen	Inside The Sound	
Rodrigo Contreras	Matraz	Vladimir Khoryjii	Butch	Chris Porciano		Lucio Dalla		Max Velychko	Thenon	
Claudio Cordero		Gav King	Fields of the Nephilim	Phil Porter		Trigger The Bloodshed		Christian Vidal		
Rob Daniels	Vehemence	Sean Kipe	Course of Nature	Ricky Portera		Atteriss		Chema Vilchez		
Bjorn Dannov	Falling To Pieces	Matthias Kirchgesser	Nevio	Rob Purnell		Necrophagist		Elias Viljanen	Sonata Arctica	
Scott Danough	Hyper, Victory Pill	Jon Kita	Diecast	Roberto R. Rodrigo		Devil's Train		Harj Virdee	SEVEN DEADLY	
Jim Davies	The Blackout	Ryan Knight	The Black Dahlia Murder	Luciano Rajas		Saiko		Angel Vivaldi	Head	
James Davies	Bad Veins	Knut	Luttenberger Klug, Rock Brew, PauT	Brent Rambler		Stone Sour		Scott Von Heldt	Vanishing Point	
Benjamin Davis	Cultura Tres	Siméon Koch	Eluveitie	Josh Rand		EKTOMORF		Tommy Vucur	Solo Artist	
Juan De Ferrari	Epica, MaYaN	Alexander Kodnar	THY ART IS MURDER	Michael Rank		August Burns Red		Everton Waldman	Rancorous	
Deehelxix	Poison My Blood	Kirk Kolaitis	Nikolay Kotov	Abdul Talib Bin Rasak	Tribe, Elusion, Tri-Ryche, Toyak, Academy Of Rock	Jive Talking, Gradle		Pop Waravit	Fozzy, Stuck Mojo	
Isaac Delahaye	Doppler Inc.	Eric Krasno	VOYAGER	Addy Rasidi		Draven		Rich Ward	Triptykon	
Sean Delander	Pennywise	Tomy Laisto	WACRY	Dan Reeves		Ted Maul		Tom G. Warrior	DAZZLE VISION	
Koen Delanghe	We Butter The Bread With Butter	John Lamacchia	Candiria, A Family Plot	Sebastian Reichl		Deadlock		Yu Watanabe	RatDog, The Dead	
Doug Doppler	Lolita Komplex	Lanvall	Edenbridge	Paul Reid	Beverly Knight, The Saturdays, Session			Brian "Head" Welch		
Simone Dow	Section A	Igor Lapuhin	Nogu Svelo	Brandon Reihana		BLINDSPOTT		Mat Welsh	While She Sleeps	
Fletcher Dragne	Engel	Timmy Lardner-Brown	Killrazer	Reno		VIVID		Robert Westerholt	Within Temptation	
Kenneth Iain Duncan	Trigger The Bloodshed	Terry Lauderdale	Evans Blue	Markus Resi		myGRAIN		Matthew Wicklund	God Forbid, Warrel Dane	
Dushi	CHAOS DIVINE	Parker Lauzon	Delta	Javier Reyes		Animals as Leaders		Jussi Wickström	Turisas	
Torben Enevoldsen	Paulo Gonzo	Benjamin Lechuga	Holy Grail	Mike Reynolds		For Today		Nathan Wood		
Niclas Engelin	Jon Finn Group	Alex Lee	For Today	Aaron Richert		TimeLord		Stefano "Sebo" Xotta	UTEZ, Strings 24	
Martyn Evans	Jadallys	Ryan Leitru		Arjan Rippen		ReVamp		Lucas Yaksic	Lucas Yaksic Band	
Ryan Felton	Lilasyter	Gary Lenoire	Bleeding Through	Christophe RIME		RIME		Sami Yli-Sirniö	Kreator, Barren Earth	
Rui Fingers	Blue October	Brian Leppke	Behold...the Arctopus	Rithan		Deja Voodoo Spells		Hikaru Yoshida	ex. deZibet, PUGS	
Jon Finn	PANIC DHH	Mike Lerner	Däðh	Philippe Robert		Metalasia		Yusei	THE MIDDLE	
Georges Floride	Rolla, Deep Banana Blackout	Eyal Levi	Alisa	Yannick Robert		Roch Voisine, Wazimba		Pavel Zaburuev		
Max Flövik	Mnemic	Eugeny Levin	DragonForce	Chad Robles		Eternal Now		Luciano Zadro	Solo Artist	
Justin Furstenfeld	Billy Cobham, Airtro Moreira	Herman Li	Asking Alexandria	Robby Rockbag		Steelwing		Bor Zuljan		
Robbie Furze	Julie Zenatti	Cameron Liddell	Letzte Instanz	Alexia Rodriguez		Eyes Set to Kill				
Fuzz	Wacry	Jani Liimatainen	Cain's Offering	Omar Rodriguez-Lopez		The Mars Volta				
Mircea Gabriel Eftemie	Fishbone	Petri Lindroos	Ensiferum	Gianni Rojatti		The Casual's, Solo Artist				
Per Gade	Aloha from Hell	Manu Livertout	Manu Livertout band	Igor Romanov		Alisa				
Fabien Galland	Houwitser	Juan Pablo Lobos	Deadly Motor Vehicles	Patrick Rondat		Patrick Rondat, Elegy				
Pablo Garcia	MR.BIG	Loki	The Ransack	Jörg Roth		Into Eternity				
Wes Geer		Alejandro Londoño	Cultura Tres	Chris Rubey		Saltatio Mortis				
Rocky George						The Devil Wears Prada				
Andreas Gerhard										
Susan Gerl										
Richard Gielen										
Paul Gilbert										